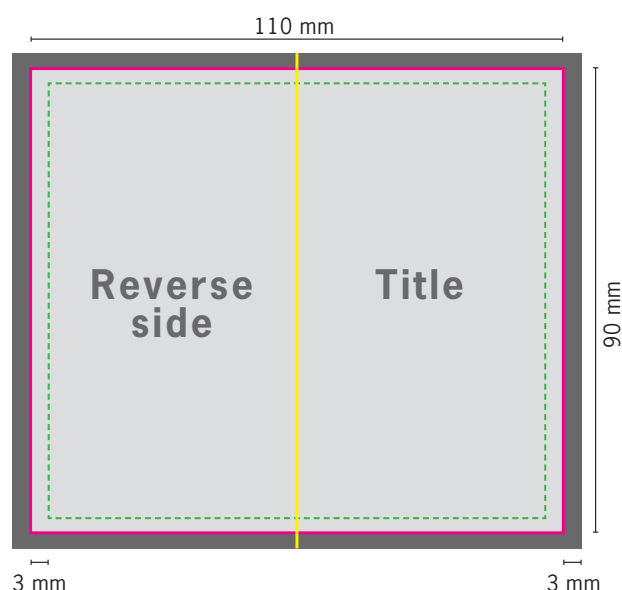
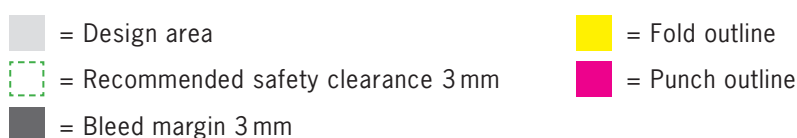
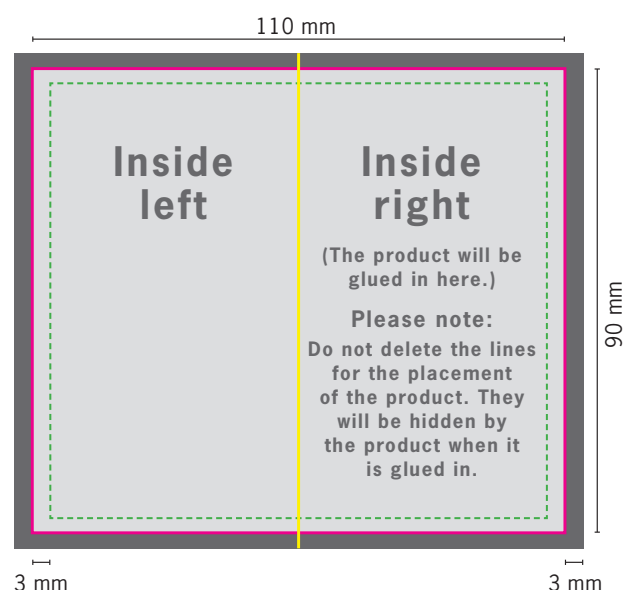


RICHARTZ® EINKAUFSWAGENLÖSER – Data file for individual packaging

PRINT-PDF PAGE 1:



PRINT-PDF PAGE 2:



- Minor colour deviations, cutting and folding tolerances to preliminary orders or within the print run cannot be objected to.
- For production reasons, the direction of the paper cannot be taken into account during placement. A slight break-up caused by this during folding and deviations in the strength or stiffness of the packaging must be accepted and cannot be objected to.
- Folding and punching contours are to be included in the layout.
- Folding and punching contours are created in special colours that may not be renamed, converted, or edited.
- With the exception of the folding and punching contours, no other spot colours may be present in the document.
Please only consider CMYK colours and logos for the design. Existing true colours are automatically converted to CMYK, which can result in colour deviations.
- A circumferential trim allowance of at least 3 mm must be applied.
- The lines for product placement must be retained, but can be colour-matched.
- We recommend a safety clearance of 3 mm to the inside for contents that should not be cut.
- Print data must be supplied as 2-sided PDF X/4 with "ISO_Coated_V2" profile.
Deviating color profiles are automatically replaced, which can result in color deviations.
- The resolution of the supplied image data must be at least 300 DPI.
- Due to the labelling obligation (ProdSG), a distributor/manufacturer must be indicated on the packaging.
If no corresponding information has been inserted in the print file, Richartz GmbH will be inserted as manufacturer.

Delivered open data format incl. bleed allowance: **116x96mm**.

Delivered open final format: **90x110 mm**. No marks are required (registration marks, crop marks, etc.).

Further technical data can be viewed on file creation at richartz.com/printspection.pdf.